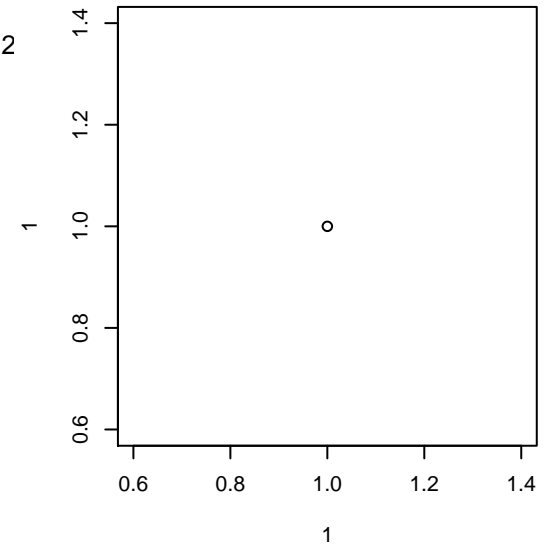


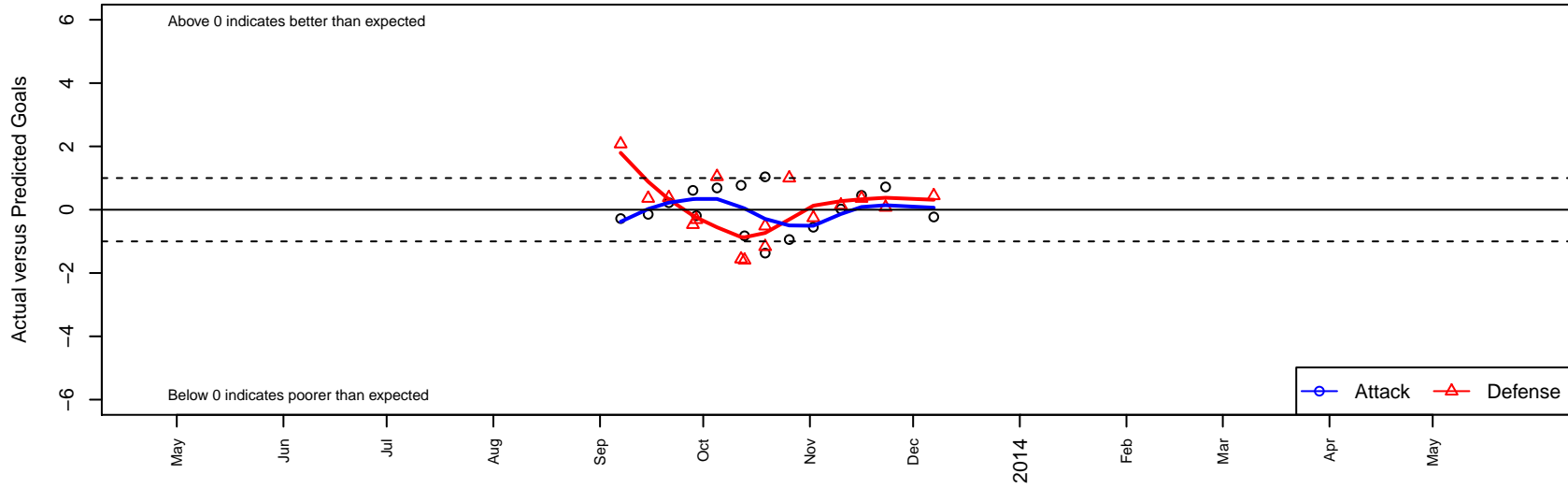
Beach FC Gold G01

Long Beach, CAS
 G01 total strength=973
 attack=1.92 defense=1.72
 fall league = SCDL FI1 U12
 alt names used:
 Beach FC – Long Beach G01 Gold

Venues played:
 SCDL FI1 U12
 SoCal DL Fall Showcase Flight 1 (Flight 2) U12



Beach FC Gold G01
 Dots are actual minus expected GF (blue circles) and GA (red triangles).
 Blue line is smoothed change in attack strength. Red is smoothed change in defense strength.



	date	home		away		venue	pred.home	pred.away
6831	2013-12-07	Beach FC Gold G01	0	Legends FC Gold G01	2	SCDL FI1 U12	0.23	2.44
6702	2013-11-23	Legends FC FI1 G01	3	Beach FC Gold G01	1	SCDL FI1 U12	3.08	0.28
6623	2013-11-16	Beach FC Gold G01	1	Anaheim Surf White G01	2	SCDL FI1 U12	0.55	2.36
6559	2013-11-10	FRAM Soccer Club G01	2	Beach FC Gold G01	1	SCDL FI1 U12	2.14	0.98
6403	2013-11-02	LA Galaxy South Bay Gold G01	3	Beach FC Gold G01	0	SCDL FI1 U12	2.75	0.55
6256	2013-10-26	Beach FC Gold G01	0	LA Galaxy South Bay Navy G01	0	SCDL FI1 U12	0.94	1.00
6100	2013-10-19	Beach FC Gold G01	0	Pateadores Irvine White G01	2	SoCal DL Fall Showcase Flight 1 (Flight 2) U12	1.37	0.83
6112	2013-10-19	Beach FC Gold G01	2	So Cal Athletic Stanwood G01	1	SoCal DL Fall Showcase Flight 1 (Flight 2) U12	0.96	0.48
5974	2013-10-13	Legends FC Corona G01	3	Beach FC Gold G01	0	SCDL FI1 U12	1.41	0.82
5923	2013-10-12	Legends FC Gold G01	4	Beach FC Gold G01	1	SCDL FI1 U12	2.44	0.23
5750	2013-10-05	Beach FC Gold G01	1	Real So Cal White G01	1	SCDL FI1 U12	0.31	2.04
5625	2013-09-29	Beach FC Gold G01	0	Arsenal FC Elite FI1 G01	2	SCDL FI1 U12	0.19	1.69
5577	2013-09-28	Strikers FC Cerritos A G01	2	Beach FC Gold G01	1	SCDL FI1 U12	1.53	0.39
5435	2013-09-21	Beach FC Gold G01	1	Strikers FC Cerritos B G01	1	SCDL FI1 U12	0.78	1.38
5319	2013-09-15	Westside Breakers White G01	2	Beach FC Gold G01	1	SCDL FI1 U12	2.36	1.14
5130	2013-09-07	Beach FC Gold G01	0	Legends FC FI1 G01	1	SCDL FI1 U12	0.28	3.08